



University College London Hospitals
NHS Foundation Trust

Hospitals without walls - Experiences of transforming UCLH OPAT into the community

Florence Taylor- OPAT Clinical Nurse Specialist
Sarah Logan- OPAT Clinical Lead

uclh



University College London Hospitals

NHS Foundation Trust

Agenda

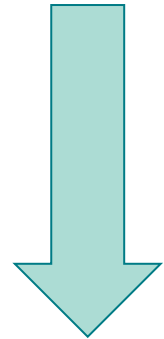
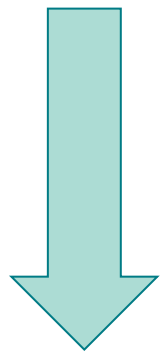
- Response to Covid-19
- Potential benefits of specialist nurse care at home
- Specialist nurse care at home in practice
- Measuring outcomes



Response to Covid-19

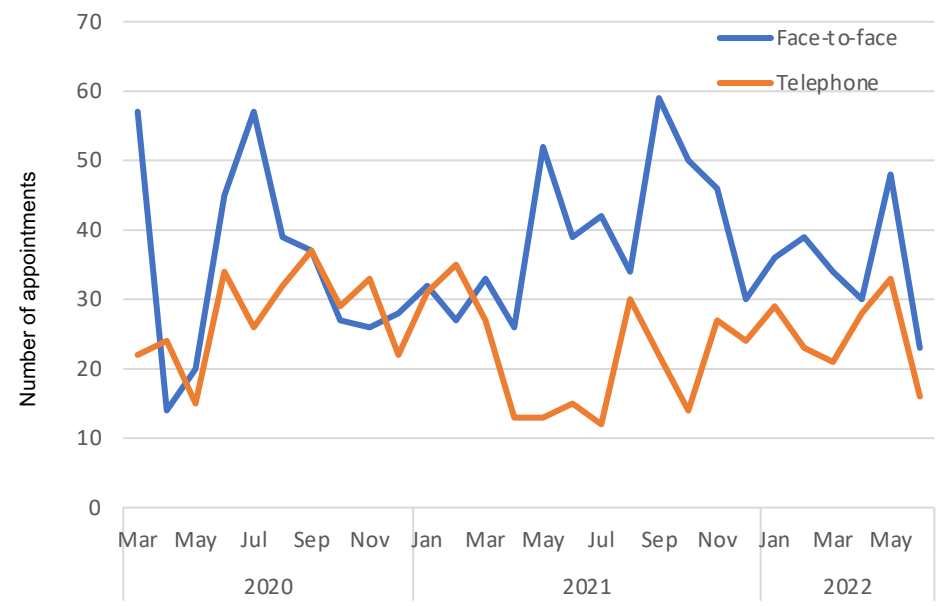
Incentives to see patients for tariffs

Current practices



Telephone appointments
Community visiting

PICC line removal





Potential benefits of specialist nurse care at home



Why it's good for the patient

- ❖ Treatment in familiar environment
- ❖ Protection for vulnerable
- ❖ Promoting return to normal activities

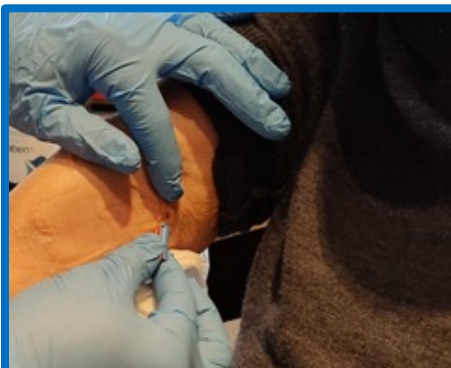


Why it's good for UCLH

- ❖ Working closely with UCLH@Home
- ❖ Prevents late discharge
- ❖ Prevents inappropriate use of SDEC

Specialist nurse care at home in practice

Case 1:
PICC line
removal



95 y.o. Endocarditis



48hr Daptomycin

Outcome:
10 PICC
removals in
community

Case 2:
Teaching
self-
administration



45 y.o. Bronchiectasis

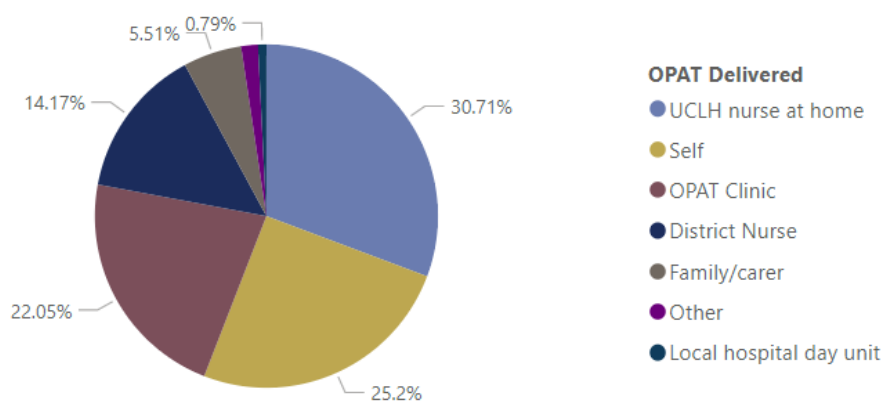


Ceftazidime TDS

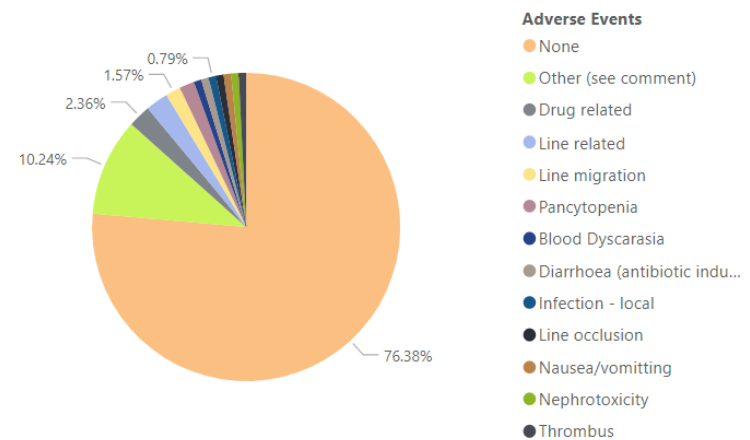
Outcome:
3 taught in the
community

Measuring outcomes

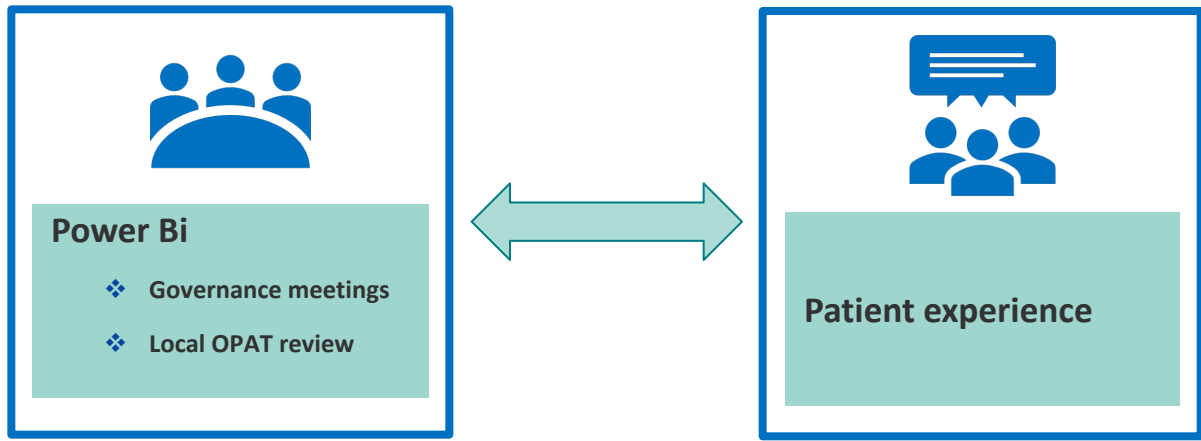
How OPAT is being delivered*



OPAT end of treatment note*



Opportunities



*Sept 21-May 22



University College London Hospitals

NHS Foundation Trust

Questions